



## *"Slices"*

*December 2011*

*Greetings from Mill Creek !*

*We hope that this issue finds you well and full of turkey and dressing. We had beautiful Thanks-giving weather here and it was around 70 degrees.*

*We're doing quite well here despite some negative publicity recently. Most of those issues will work themselves out over the next couple of months.*

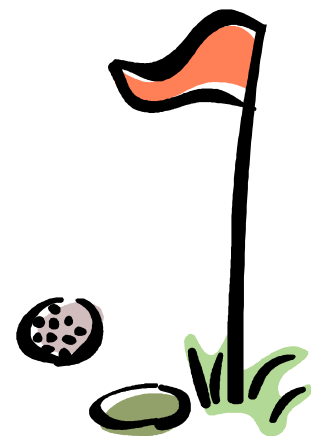
*For those of you who are planning on renewing your memberships, please note that there is a discount for all Elite Members, but only if paid by December 1 deadline. If you have forgotten, please give us a call and we'll give you an extra day if necessary. Also, if you are a potential new member, be sure to buy your pro-rated membership for 2011 to save the initiation fee that kicks in January 1st. If you have any questions, please give us a call or shoot us an email. Enjoy your Holiday Season!*

*Sincerely,*

*Joe & Kevin*



# Joe on Golf



For all of you that have departed for the season, we will miss you! Thanks very much for a great season here at Mill Creek. We look forward to seeing you over the holidays and next Spring.

There are many of you that do a fantastic job leaving the course in better shape than you found it. This month I would like to specifically thank **George Ellison**. He is a great supporter of Mill Creek and takes good care of the golf course. He always has Mill Creek's best interest at heart. Thanks George! We really appreciate you. Next month, we're going to thank another supporter who leaves the course in better condition than they found it.

Attn: Potential Members and Current Members

Remember that you can only purchase a mid-year pro-rated membership in your first year of membership. Additionally, 2011 is the last year you can purchase a membership without paying an initiation fee. So if you are considering joining in 2012, you might want to come by this year and purchase a pro-rated 2011 membership and a 2012 membership to avoid the initiation fee. If you are already a member in good standing and pay by January 1st, no initiation fee will apply.

New membership packages have been mailed during the first week of November. If you did not receive or would like to receive a packet, please let us know immediately. Memberships are due January 1st, but there is a discount for Elite Members who renew by December 1.

Please welcome New Elite Member, Leonard Hilty. Leonard is an Attorney here in Franklin and has officially gotten the Golf Bug. Please also give a belated welcome to David Jones, Leonard Cook and former Club Champion Ron Drummond.

The chipping green is now open and is coming in nicely. However, due to it being soft and still slightly vulnerable, we ask that you repair any ball marks that you make.

Please note this time of year it is especially important for carts to remain on paths near Greens. The dormant grass is very vulnerable this time of year and will not regenerate for another 5—6 months.

I would also like to remind all members to give me a call if they have any questions about memberships, rumors, or items of interest for next season.

Thanks,

Joe



## **December tips— due to the compliments from Nov, we're reprinting below.**

Take advantage of your opportunities to play if you are in a cooler climate.

1. **Hit enough club:** This is true always, but it particularly important in cooler temperatures. Several factors contribute to the ball not flying as far in the cooler weather. *1. ball flies better in humid air. Cooler air is much heavier, 2. more layers of clothing contribute to decreased flexibility, 3. Cooler temperatures don't allow the ball to compress.*
2. **Learn to knock it down:** The fall tends to bring some wind and a little cold to the course. The wind can both help and hurt. But in order to neutralize its affect on the ball, you should learn to hit the knockdown shot. We recommend playing the ball as normal in your stance. Then choke down an inch or two. With a 3/4 swing and an abbreviated follow through to a fairly low finish, your ball should take off lower than normal with penetrating trajectory. As a bonus, your ball should come off with some good spin and then land, hop once or twice and stop. This is a great shot into the wind but works extremely well in cross winds as well and insures a straighter more predictable outcome.
3. **New Feature:** On the following page, we're going to start printing a few articles from the golf world that relate to some of the things we do here at Mill Creek and some months we're going to ask you your opinion about future projects and ideas that will improve Mill Creek. They will be informative and entertaining, but mostly we want to hear your reaction... good, bad or indifferent.
4. **Divots & Ballmarks:** We are seeing a lot of unfilled divots on course. Perhaps even worse, we're seeing a lot of ball marks that aren't being repaired or aren't being repaired properly. Please help us with this on going problem. If every player will fix two ball marks on every green, pretty soon, it will be hard to find two ball marks.

Please remember to keep your carts on the path near tee boxes and greens, repair your ball marks and fill your divots. This is particularly true in winter when the grass takes a long time to heal when damaged.

Play Well!

*Dave & Mike*

## **Should the Pro-Shop occupy the current Magnolia Room and the current Grill Room?**

We are entertaining the idea of moving the Pro-Shop to the small rooms attached to the dining room in the clubhouse.

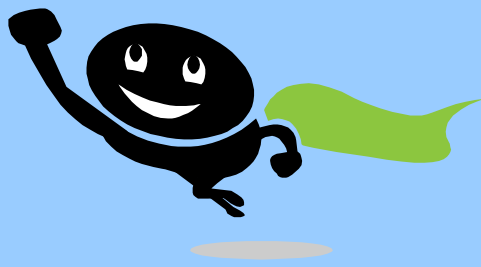
We're entertaining this idea because we want to improve the way Mill Creek flows. Some potential advantages include:

- \*Consolidation of staff
- \*Keeping the bar open more often
- \*Making #10 the #1 tee again
- \*Having a place to settle scores
- \*Improved area for Members
- \*Improved area for MGA/WGA
- \*Having a place to watch TV and gather before and after rounds.
- \*Potential to convert the current office pro-shop into locker rooms.
- \*Potential for a new putting green near the # 1 tee (current #10 tee)
- \*Better cart staging area.
- \*New exterior entrances to the new pro-shop.

Let us know your thoughts whether positive, negative or neutral.

Thanks,

Mgmt.



# On Course with Super Scott

I hope everyone is staying warm and getting a chance to play a little. The weather here is a little cooler than I am used to 100 miles south, but we have still seen some very nice days. I still have my fingers crossed for a mild winter.

We're replacing a few irrigation heads in the next few weeks, hopefully before we go into a deep freeze. This should help with a couple of greenside leaks. Updated list below of current progress on the golf course.

Creek between #4 tee and #7 green  
Area behind #14 Green  
Creek right of #5 tee box  
Creek between #14 and #15  
Creek between #11 and #18  
Removed willows near pond on #3  
Cleared flower bed by #15 green  
Removal of evergreens left of #14 green  
Removed bushes left and right of #7 green

Area right of #13 fairway  
All areas between #15 and #16  
Creek right of #13 tee  
Creek between #12 and #17  
Creek between #13 and #17  
Removed willow right of #9 fairway  
Thinning of trees right of #16 tee  
Removed bush right of #4 green  
Cleared all area between #7 and #8

This type of work will continue through the winter and should make Mill Creek a more scenic golf experience.

As Members and Regular players, we all need to do a better job of obeying cart signs. There are absolutely no exceptions for carts to be off of the paths in the following circumstances:

No carts within 30 yards of any and all Greens  
No carts within 30 yards of any and all Tee boxes  
No carts off of any Cart Path on any Par 3 hole (remember #3 is a par 3 for the ladies)

I would also like to ask all of you to do your best to rake bunkers, fill divots and most importantly properly repair your ball marks. Thanks in advance!

Scott Tullis  
Golf Course Superintendent

# "Golf Humor"



*The Laws of Golf.....*

**Law #1:** No matter how bad your last shot was, the worst is yet to come. This law does not expire on the 18th Hole, since it has the supernatural tendency to extend over the course of a tournament, a summer and, eventually a lifetime.

**Law #2:** Your best round of golf will be followed almost immediately by your worst round ever. The probability of the latter increases with the number of people you tell about the former.

**Law #3:** Brand new golf balls are water-magnetic. Though this cannot be proven in the lab, it is a known fact that the more expensive the golf ball, the greater its attraction to water.

## Millhouse Clubhouse



### Member Buffet

All Members and their guests are invited to attend the monthly Member Dinner. The next will take place at 5:30 on Friday, December 2nd. Members dine for free and may bring guests or spouses for \$ 12.95/person. We will also offer a cash bar. Reservations are required. For reservations, please call 828-524-6458.

### New Years Eve Party

Saturday, December 31st. Flier with details coming soon to your inbox.

### No Cooler Policy

We would like to remind everyone that Mill Creek is now a "no cooler" facility in accordance with NC law. We will have beverages available at the Snack window, in the Pro-shop and on the beverage cart on weekends.

If you have an event that you would like to use the clubhouse for, please contact us. We welcome birthday parties, class reunions, and other functions.

Michelle Waters

# November 4th Member Dinner

## *Menu:*

*Millhouse Salad with choice of dressing*

*Chicken Pot Pie*

*Roast Beef with Au Jus*

*Scalloped Potatoes*

*Fresh Green Beans*

*Homemade Yeast Rolls*

*Peach Cobbler*

*w/ Ice Cream*

*Coffee, Iced Tea and Water*

*Members are free, guest pay \$ 12.95*

*Members may bring up to 4 guests*

*Reservations Required 828-524-4653*

*Cash bar opens @ 5:30, Dinner begins @ 6:00*

*Deadline to Reserve is close of business Wednesday Nov. 3rd*

*Mountain View Painting & Home Improvements*



*"Quality Work at Affordable Prices"*

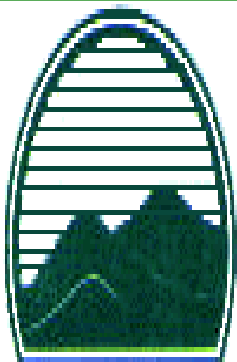
- *Kitchens*
- *Baths*
- *Decks*

*Free Estimates*

*Franklin, NC*

*Cell: 828-342-6901*

*Home: 828-369-5231*



# Wayah Insurance Group

Protecting Families and Business in Western North Carolina Since 1955

**AUTO HOME COMMERCIAL LIFE HEALTH**

**Jeff Cloer, LUTCF**  
**Life and Health Advisor**

**Mike Wood**  
**Agent/Broker**

**POB 999, Franklin, NC 28744**  
**828-524-4442 Fax: 828-369-5917**

**wood@wayah.com**

# Old School Knife Works 828-524-6842



8285 Georgia Rd., Otto, NC 28734

*Sales, Repair and Installations*

# All County Services

## Heating and Air Conditioning

**1281 Georgia Rd. #274  
Franklin, NC 28734  
(828) 349-4367**

**Jay Gaines  
NC License #28254  
Licensed Bonded Insured**

# Membership Notice

We would like to take this opportunity to thank all of our Members who have supported us throughout 2011. So far it has been both an exciting and challenging year.

Recently, we have received several questions about memberships and there has been a little confusion. We thought it best to clarify some of these questions. As most of you know, this year we made a detailed effort to make memberships come due at the end of each calendar year. Many of you paid pro-rated membership rates in order to align your membership to be renewable at the first of the year. All memberships will be due January 1, 2012.

Additionally, we want to make sure that everyone knows that a pro-rated membership will not be available for existing members next year regardless of when you sign-up. We have had this question a few times already.

Finally as many of you already know, since 2008 we have been waiving Initiation fees in an effort to build memberships. If you recall the previous owner had eliminated memberships altogether prior to 2008. Originally we were scheduled to re-instate the Initiation in 2011, but with the economy being what it was, we elected to postpone another year. \*\*\*If you are a member in 2011, and pay your membership when due (Jan. 1, 2012), no initiation fee will apply for 2012.\*\*\*

If you are an existing member, your membership package will be mailed to you directly in the early part of November.

So if you are potential new member, an initiation fee will be applicable in 2012. However, since we did pro-rate memberships as mentioned above this year, there is still technically a loophole that will allow you to purchase a pro-rated membership this year (2011) and not have to pay an initiation fee in 2012. Of course, this loophole closes January 1, 2012. Take advantage now!

Please contact the office if you have any additional questions. Thanks again!

Mgmt.

# Membership offerings for 2012



## Social Membership

**Individual: \$350.00 annually**

**Family: \$565.00 annually**

Each Social Member will be entitled to a Club sponsored complimentary monthly “Social” buffet, participation in Club sponsored social events as well as the use of the following Club Facilities: Tennis Courts, Shuffleboard Courts, Horseshoe area, a Card Room and Fitness Center. Family includes spouse and any children under the age of 23 who live in the household.

## Golf Membership

**Individual: \$1,300.00 annually**  
**Seasonal Individual: \$ 1,050.00\***

**Family: \$1,950.00 annually**  
**Seasonal Family: \$ 1,600.00\***

**NOTE: Seasonal Memberships are April 1-October 31. \*Residency Restrictions apply.**

Each Golf Member will be entitled to all the privileges and benefits of a Social Member. In addition, a Golf Membership includes no greens fees, 3-day advance access to tee times, complimentary USGA handicap service, participation in Club sponsored golf events, 1 guest passes per year with complimentary greens fees (cart fees apply), a 10% discount on all Pro Shop merchandise excluding food and beverage, and a free “Member” license plate and bag tag (new members only). Family includes spouse and any children under the age of 23 that live in the household.

## “Elite” Golf Membership- Limited to 25

**Individual: \$3,300.00 annually**

**Family: \$4,950.00 annually**

**NOTE: Those with personal carts will receive a credit for the trail fee amount**

Each “Elite” Golf Member will be entitled to all the privileges and benefits of a Social Member. In addition, an “Elite” Golf Membership includes no greens fees, no cart fees, 5-day advance access to tee times, a preferred “standing” tee time (see Membership Overview for details), complimentary USGA handicap service, participation in Club sponsored golf events, 3 guest passes per year with complimentary greens fees (cart fees apply), a 10% discount on all Pro Shop merchandise excluding food and drink, the use of a 1 bedroom villa for 2 nights per year at no charge subject to availability, and a free “Member” license plate and a bag tag (new members only). Family includes spouse and any children under the age of 23 who live in the household.

## Twilight Membership

**Individual: \$775.00 annually**

**Family: \$1,162.50 annually**

Twilight is defined as the 5 hours leading up to darkness and varied month to month depending on the time of year. For example July is 3:30, January is 12:30. Each Twilight Membership includes no greens fees (cart fees apply) up to five hours prior to darkness, 3 day advance access to tee times. Twilight members will also receive a 10% discount on Pro-Shop merchandise excluding food and beverages. No financing is available for Twilight

# *Membership Offerings for 2012*



## **Junior Golf Membership – 15 years and under**

**\$250.00 annually**

Each Junior Golf Member will be entitled to no greens fees. Juniors must play after 2:00 pm. Any Junior wishing to play prior to 2:00 pm must be accompanied by a licensed driver and will be charged a cart fee.

## **Golf Trail Fee**

**\$850.00 individual Trail Fee.**

**\$ 1,275 Family Trail Fee.**

**NOTE: Seasonal trail fees are not available**

A flat rate Trail Fee can be purchased with a golf membership by persons owning a golf cart and will entitle purchaser and immediate family members to use their cart when playing golf at Mill Creek. A trail fee will be charged for each golf cart owned by a member. A sticker will be issued and placed on the golf cart(s) to identify it as a Golf Trail Fee cart.

## **Non-Golf Trail Fee**

**\$450.00 annually per cart**

A non-golf Trail Fee can be purchased by persons owning a golf cart and will entitle purchaser and immediate family members to drive their personal cart on the golf course cart paths before 7:00 am and after 7:30 pm. Carts must remain on paths at all times and **no clubs or bags will be allowed** on the course. No golf privileges or discounted rates will apply with this purchase. Non-compliance will result in immediate removal from the course and revocation of privileges without refund. A sticker will be issued and placed on the golf cart(s) to identify it as a Non-Golf Trail Fee cart.

## **Corporate Pass Membership\***

**\$1,800.00 annually \*Restrictions Apply – Available to select companies**

Each Primary Holder of a Corporate Membership will be entitled to 60 rounds of golf with a cart - tee times required; up to 4 additional holders as designated by Primary Holder; 5 complimentary USGA handicaps; the use of a 1 bedroom villa for 2 consecutive nights subject to availability, participation in our complimentary monthly "Social" buffet for the Primary Holder and up to 3 guests, free advertising in our monthly newsletter and a link on our website.

**2011 is the last year that Membership Initiation Fees don't apply.**

**Membership financing is available.**

**Paying in cash? Ask about discounts for paying by cash or check.**

## Women's Golf Association News

For information about the Mill Creek Women's Golf Association please contact Barbara Craig. The WGA will formally begin in May of 2012.

# *An Early Thanksgiving*

**Thursday, November 17th, 2011**

## **Menu:**

**Millhouse Salad with Choice of Dressing  
Spiral Cut Ham with Brown Sugar Glaze  
Roasted Turkey with Cranberry Chutney  
Country Dressing  
Homestyle Turkey Gravy  
Mashed Potatoes  
Creamed Corn  
Yeast Rolls  
Assorted Homemade Pies  
Coffee, Tea and Water Included**

**\$ 15.95/person + Tax**

**Bar opens at 5:30, Dinner at 6:00pm  
Reservations Required 828-524-6458  
Deadline to Reserve is November 15th.**



# Autumn Lunch

You are cordially invited join us to for Sunday Lunch.  
November 20th from 11am—2pm.

## Menu:

Tomato Basil Soup

Meatloaf

Fried Chicken

Sweet Potato Mash

Steamed Broccoli with Cheese

Banana Pudding

Open to all Homeowners, Members and the Public  
\$10.95/person + tax.

Lunch Buffet will be open from 11am—2pm.

Reservations Required prior to 11/18. Please call  
828-524-6458 or Sign up at the Pro Shop.

# Looking for a Game or Group To Play with?

Mill Creek hosts several leagues and groups each week in addition to Tournaments.

## **Mondays:**

Jackson County Men play every other Monday @ 8:00

## **Tuesdays:**

Men's Golf Association 8:00 Shotgun start.

## **Wednesdays:**

Carolina Mtn. Ladies Nine Holers @ 8:00am.

Dogfight @ 12:00

Wednesday Night Game @ 2:30 sharp

## **Thursdays:**

Women's Golf Association 8:00am Shotgun start.

Thursday Night League 9 Holes @ 5:30

## **Fridays:**

Dogfight @ 12:00

Points Game @ 12:30

## **Saturdays:**

Big Points Game @ 12:00

## **Sundays:**

Dogfight @ 12:00

Points Game @ 12:30

For information on any of these groups/leagues, please contact the Pro-Shop @ 828-524-GOLF (4653)

## Announcements

If you have an announcement for the newsletter, please email it to [joe.culpepper@millcreekcountryclub.com](mailto:joe.culpepper@millcreekcountryclub.com) and we'll put it into the next newsletter.

**Sell Your Golf Cart:** Mill Creek will buy your Golf Cart and pay You Cash. Just bring it down to the Pro-Shop, we'll have our mechanic take a look and make you a cash offer.

**Real Estate:** Mill Creek Properties can list and sell your villa. Call 828-524-6458. NC Licensed Broker. We also serve as a Villa Management Company and can rent and lease your villa during times when you are away. We currently have 18 villas in the program.

**Got Visitors?** Give Mill Creek Country Club a call and we can Schedule a Villa Rental for your friends and family. 828-524-6458

Are you in need of Golf Cart Service? Mill Creek has a full time Mechanic on duty. Golf Carts need to be serviced at least once a year. Regularly serviced carts perform better and get better gas mileage. We offer our regular service for \$ 75.00. We can also perform any number of repairs including tires. Give us a call 828-524-6458.



## More Announcements

### Need to Re-Grip?

Dave and Mike are happy to serve all of your Grip needs and have a good selection on Hand and can custom order any grip you would like. Grips should be replaced at least once every season. See the Pro-Shop for details.

### Club Repairs

George Ellison has started a full service Club Repair business. He can also build custom clubs, repair heads and shafts.

### Bridge and Mahjong:

If you have interest in playing Mahjong or Bridge please contact the following:

Mahjong—Ellen Bailey 828-369-5884.

Bridge—June Hefferan 828-369-3727.

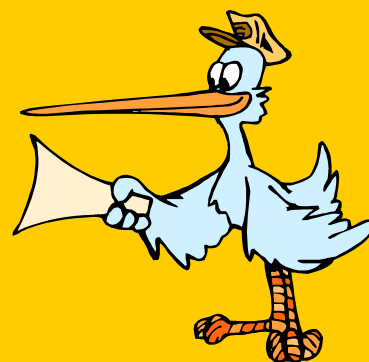
With winter approaching, we are looking for different types of gatherings to keep us all from getting cabin fever. If you have ideas about games, functions or events that we can host in the Clubhouse, shoot us an email. [rentals@millcreekcountryclub.com](mailto:rentals@millcreekcountryclub.com)



Hats off to Carol McCoy! Carol adopted the kitten that was hanging around the pavilion. Congratulations Kitty.... You got great home. Here's a picture of Carol with her new cat. Look how excited Carol is in this photo!!!

We are deeply saddened to learn of the passing of Robert Wallace on October 31st, 2011.. Robo as he was affectionately known is survived by his wife Marlene, daughter Wendy and son Bobby. He was always warm and friendly to all visitors here at Mill Creek and volunteered regularly. He was truly a gentleman and he will be dearly missed by all who knew him.

Congratulations to Kevin Bell and his wife Jody on the birth of their son, Blake Kinley. Blake decided to arrive a couple of months early and subsequently drive his parents to worry a little earlier. We are proud to announce however, that both little Blake and his mom are doing well.



## NEWSLETTER ADVERTISERS

NCI – National Communications, Inc.

**Karl Gillespie**

100 Porter St. Franklin, NC 28734

**Your Technology Systems Provider**

(828) 524-4624

Security Systems

(828) 371-2220

Camera Systems

karl@nci-nc.com

24 hr. Monitoring

www.nci-nc.com

Whole House Audio

**Linda Waugh, DBA**

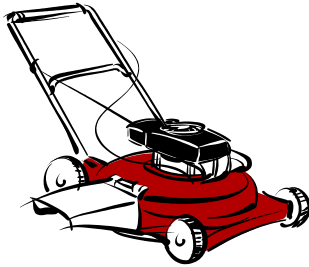
Fully Licensed and Insured

References Available



**A Detailed Cleaning & Yard**

*“One Call Cleans It All”*



(828) 524-5856

(828) 421-7437

Franklin, NC

If you would like to see your advertisement here, please contact Joe Culpepper @ 828-524-6842 or email to: [joe.culpepper@millcreekcountryclub.com](mailto:joe.culpepper@millcreekcountryclub.com). This newsletter has a circulation that exceeds 6400.

# November 2011



Sun	Mon	Tue	Wed	Thu	Fri	Sat
		1	2	3	4 Member Dinner 5:30	5
6	7	8	9	10	11 Wedding Recep- tion	12
13	14	15	16	17 Open Dinner	18	19
20 Sunday Lunch 11-2pm	21	22	23	24	25	26
27	28	29	30			

# December 2011



Sun	Mon	Tue	Wed	Thu	Fri	Sat
					1 Private Meeting Grill Rm	2 Member Buffet 5:30
3	4	5	6	7	8	9
10	11	12	13	14	15	16
17	18	19	20	21	22	23
24	25 X-mas Day	26	27	28	29	30
31 New Years Party	<b><i>Happy New Year !!!</i></b>					



Email: [rentals@millcreekcountryclub.com](mailto:rentals@millcreekcountryclub.com)

**OFFICE**

Monday - Friday  
8:00 am—4:30 pm  
(828) 524-6458 (800) 533-3916  
Extension 2

**PRO SHOP**

Daily 7:30 am - 6:30 pm April-September  
8:30 am - 4:30 pm October-March  
(weather permitting)  
(828) 524-GOLF (828) 524-4653  
Extension 1

**19TH HOLE (WINDOW)**

828-349-0402  
10-4:00 (closed Mondays)

**Clubhouse & Bar**

Room Available for Parties & Special Events  
(828) 524-GOLF

**REAL ESTATE**

Extension 6

**MASSAGE THERAPY**

Extension 5

## About “Slices”

“Slices” the newsletter is a co-operative newsletter consisting of articles and information from multiple contributors that have involvement with Mill Creek Country Club, Inc., the MCEPOA, and other various groups and organizations.

The opinions expressed within various sections of this newsletter are not necessarily shared by all groups.

Articles for the newsletter are compiled from the various contributors and are printed and Distributed by Mill Creek Country Club, Inc.

*Joe Culpepper/Editor*